

Installation Instructions

Safe Screen Handling	Recommended Safety Tools
Store the screen flat or hanging only – do not lay on uneven surfaces	Safety Glasses
Do not stand screen cloth on its side for storage	Hard Hat
Do not bend or walk on screen cloth	Gloves
Do not throw screen cloth on the ground	DO NOT USE: Impact Wrench - Hand Tension only
Screen Installation is a 2 person job	

REMOVAL OF OLD SCREEN

Turn Screening Plant Off

- Wait for the screen box to stop vibrating and all moving parts to stop moving.

Loosen Tension Bolts

- Go to the tension end of the screen box and loosen the tension nuts on the side of the screen box. If there are four nuts, loosen them in half turn increments and in rotation until the tension is off the screen you are removing. If there are two nuts, loosen them in half turn increments also. Once the tension is released, it is OK to remove the nuts completely. If the tension “UBOLT” can fall away from the machine, leave the nuts turned one or two threads.

Remove Screen from Tension Envelope

- This may be achieved by hitting the banana bar with a rubber mallet. If you have removed the tension nuts completely, stay clear of the hook and banana bar as they exit from the tension envelope.

Remove Banana Bar from Hook

- If the clearance is available, simply leave the banana bar in position and push the screen towards the anchor end. If the clearance is not available, slide the banana bar through the tension take up slot in the screen box sides.

Pull Hook from Anchor End & Discard Screen

- Discard old screen in a suitable container.

PRE-INSTALLATION

Clear Tension & Anchor Ends of Screen Box

- Check the tension and anchor ends of the screen box for material build up that may interfere with the installation of the new screen.

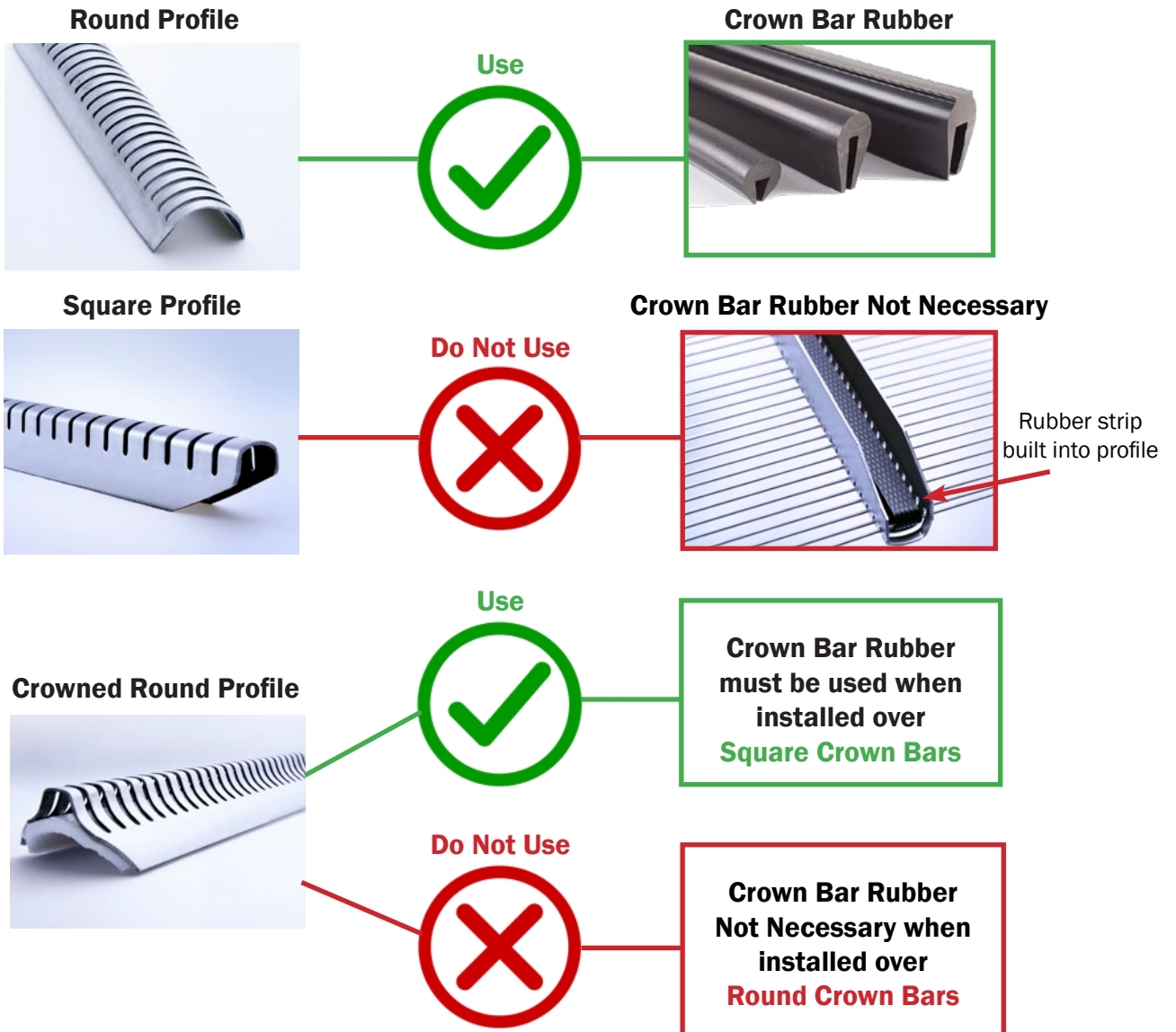


Fixed End Screen Ledge

Crown Bar Rubber

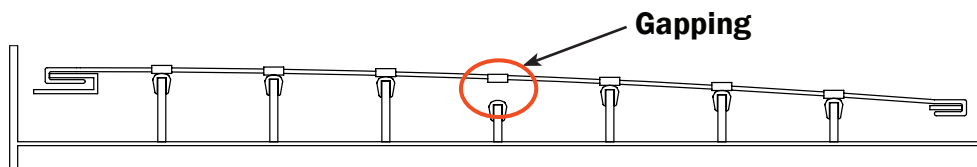
!!!IMPORTANT!!! Screen wires must NOT sit directly on bare crown bars - wire breakage will occur if metal to metal contact is not prevented with crown bar rubber or a specially designed profile.

Check your screen profiles to determine if you need to place crown bar rubber on your crown bars prior to installation



Inspect Cross Members

- Check the cross members for any wear, looseness or bends. If any of these conditions exist, they must be repaired prior to installation of the new screen because un-repaired they will have a negative effect on the service life of the screen.
- **Check Crown Bar Height**
- Working from the fixed end to the tension end, pull a string tightly over the crown bar supports to check for possible height differences.
- If gapping exists between the string and any of the crown bars, then the height of the crown bars must be corrected.
- Breakage will occur if crown bar height differences are not fixed prior to installation.



Measure Screen

- Measure length & width of replacement screen and machine screen box to compare.
- Make sure that the number of screen profiles matches the number of machine crown bars.

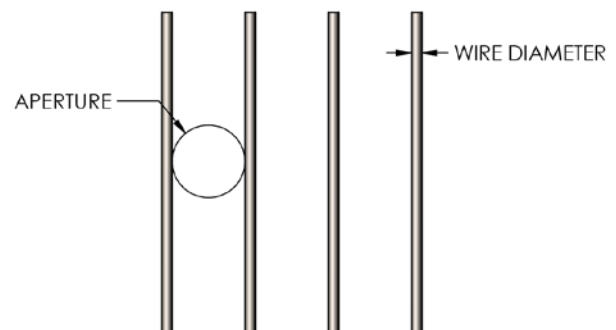
Bolts

- Wedges, springs, or rubber donuts SHOULD NOT be used.
- Ensure that the screen box is equipped with bolt-type fasteners only.
- Ensure that bolts are not rusty or stripped and are the correct length prior to installation.

Bolt-type Fastener Tension System



How to Correctly Measure Aperture & Wire Diameter



INSTALLATION

Remove Screen from Box

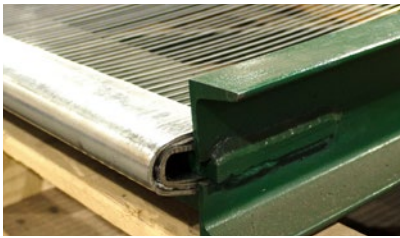
- Be careful with heavy wire screens as they are packed under tension and may spring out when un-rolling them.

Seat Anchor End Hook

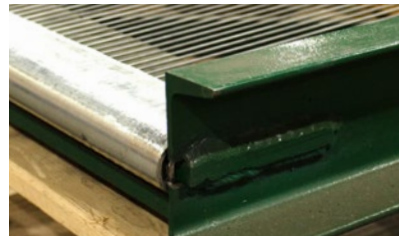
- Place the first hook at the anchor end of the screen box. Make sure that it seats itself correctly.

!!!IMPORTANT!!! Take special care not to catch the “lip” of the screen hook when seating in place - this will cause the screen to rapidly de-tension during use as the hook is forced apart.

Incorrect



Correct

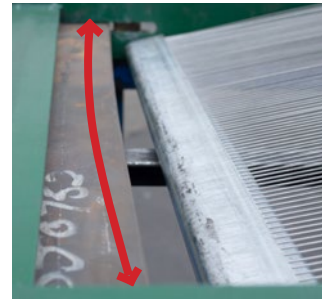


Pull Screen towards Tension End

- Spread the moving profile strips to match up with the cross members of the screen box.

Banana Bar Orientation

- The banana bar (tension bar) has a subtle bend to it. Ensure that the bar is oriented as shown. When the screen hook is seated correctly over the banana bar, the center point of the bar will hit the back of the hook first.



Seat Tension Hook

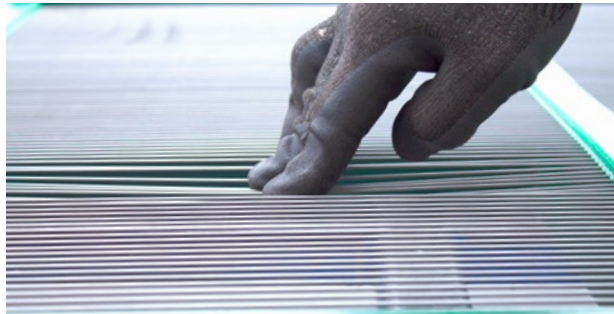
- Place the free hook in the tension envelope and insert the banana bar. Make sure that the banana bar is all the way to the back of the hook and seated properly.

Tensioning

- Take up the slack in the screen by tightening the tension nuts. When the wires in the screen have initially straightened make sure the anchor end hook is still seated, that the profile strips are located right above the cross members, and that the banana bar is seated correctly in the back of the tension hook.
- Start to tension the screen. Use 2 turn increments and rotate the order of tightening. Continue to tighten in this manner until the screen is taut. It is normal for center wires to tighten first and then the outside wires. If you experience the opposite, loosen the screen and check that the banana bar has been inserted the correct way.

Test Tension

- Proper tension is achieved when all the wires on the screen are tight. It should be possible to run your fingers over the screen and pluck individual wires and hear them sing.



Check Profile Strip Fit

- Make sure that the profile strips fit snugly over the cross members. If the strips feel loose, zip-ties can be used to tie them down.

Test Run

- Test run the screen with no load for a few minutes before rechecking tension by checking if bolts remain tight. Next run screen loaded for two hours before rechecking bolts and overall tension a final time.

****If you have any questions during the installation process or about the product, please contact your dealer***